



#### OFFICE HOURS:

Monday to Friday	9 am	to	5 pm
Saturday	9 am	to	2 pm
Sunday and Bank Holidays	12 noon	to	2 pm

## 10 good reasons to choose DMA

- \* Open 7 days a week.
- \* Filey's longest established family run independent estate agency.
- \* Prompt efficient friendly service.
- \* 360° virtual tours and floor plans.
- \* Free advertising: no sale - no charge.
- \* Free no obligation market valuation.
- \* Free accompanied viewing.
- \* Dedicated sales progression.
- \* Prominent town centre location.
- \* Modern walk-round self selection display.

RESIDENTIAL  
SALES

**DMA** ESTATE  
AGENTS

COMMERCIAL  
SALES



Proprietors: David Mansfield ATTON FNAEA.  
Samantha ADDISON  
[www.dmaestateagents.co.uk](http://www.dmaestateagents.co.uk)  
ESTABLISHED 1992



These particulars are intended only to give a fair description of the property, as a guide to prospective buyers. Accordingly a) their accuracy is not guaranteed and neither DMA Estate Agents nor the vendor(s) accept any liability in respect of their contents; b) they do not constitute an offer or contract of sale, and c) any prospective purchaser should satisfy themselves by inspection or otherwise as to the correctness of any statement or information in these particulars.

# DMA

ESTATE  
AGENTS



14 WOOLDALE DRIVE, FILEY YO14 9ER



**Freehold £385,000**

#### FEATURES

- \* Large three bedroom detached bungalow.
- \* Located on the popular country park estate.
- \* Built in the early 1970s by Northern Ideal Homes.
- \* Gas central heating to radiators.
- \* Upvc double glazed windows.
- \* Cavity wall insulation.
- \* Modern fitted kitchen.
- \* L-shaped lounge / dining room.
- \* Conservatory
- \* Garage
- \* Enclosed south facing garden.
- \* **Sold with no onward chain.**
- \* Viewing is highly recommended.

#### ACCOMMODATION IN BRIEF

INTERNAL: Front Door to Entrance Porch. Entrance Hall. L-Shaped Lounge / Dining Room. Kitchen. Three Bedrooms. Bathroom. Separate WC.  
OUTSIDE: Front garden. Drive to garage. Enclosed south facing rear garden.

**26 Belle Vue Street, FILEY, North Yorks. YO14 9HY. Telephone: 01723 515527**  
[www.dmaestateagents.co.uk](http://www.dmaestateagents.co.uk) / [www.rightmove.co.uk](http://www.rightmove.co.uk)



14 WOOLDALE DRIVE, FILEY

***Upvc Front Door to:***

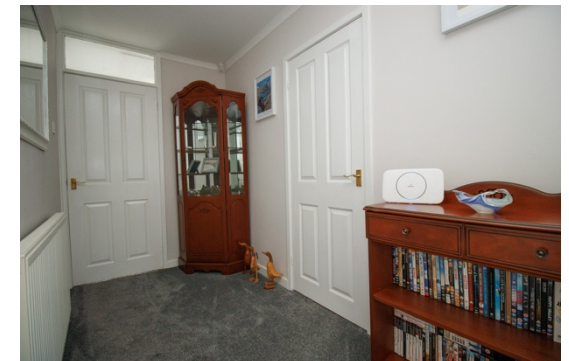
**ENTRANCE PORCH**

Radiator.



**ENTRANCE HALL**

Radiator.



*/ continued over*

14 Wooldale Drive, Filey -

## L-SHAPED LOUNGE / DINING AREA

### LOUNGE

5.28m x 3.42m (17'4" x 11'3")

Electric fire in marble surround and hearth. Upvc double glazed window.



### DINING AREA

3.91m x 2.23m (12'10" x 7'4")

Radiator. *Upvc sliding patio doors to the Conservatory.*

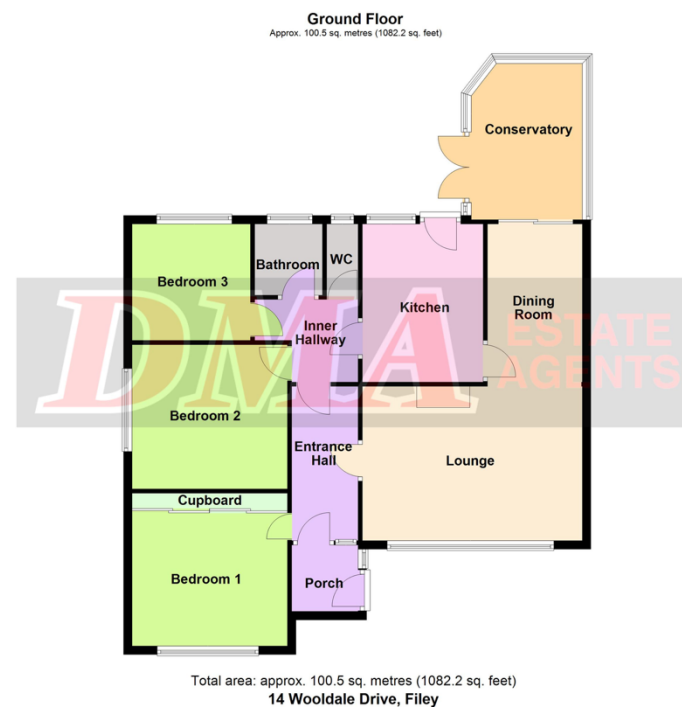


### CONSERVATORY

3.68m x 2.61m (12'1" x 8'7")

Radiator. Laminate flooring. Upvc double glazed windows. *Upvc double doors to garden.*

## Floor Plan:







## KITCHEN

3.70m x 2.84m (12'2" x 9'4")

Inset stainless steel sink and drainer. Excellent range of base cupboards with worktops over. Matching wall cupboards. Inset gas hob with extractor hood over. Built-in electric double oven. Integrated 'fridge / freezer, automatic washing machine and dishwasher. Upvc double glazed window. **Upvc rear door.**



Council Tax Band

**D.**

## DIRECTIONS:

Take the road to Scarborough out of Filey. Go straight across the large roundabout at the beginning of Scarborough Road onto Fir Tree Drive. Take the second right onto Wooldale Drive and the property is located on the right hand side.



**INNER HALL**

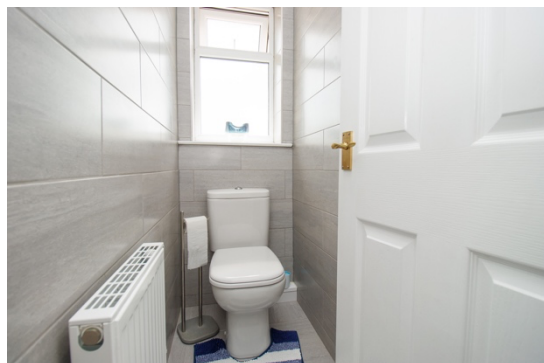
***Loft access.***

**Viewing strictly by appointment only through DMA Estate Agents**

*/ continued over*

**BATHROOM**  
**1.67m x 1.60m** (5'6" x 5'3")

Bath with shower over and screen. Handbasin in vanity unit. Fully tiled walls. Chrome towel radiator. Upvc double glazed window.



**SEPARATE WC**

Radiator. Upvc double glazed window.

**BEDROOM ONE** **3.65m x 3.12m** (12'0" x 10'3")

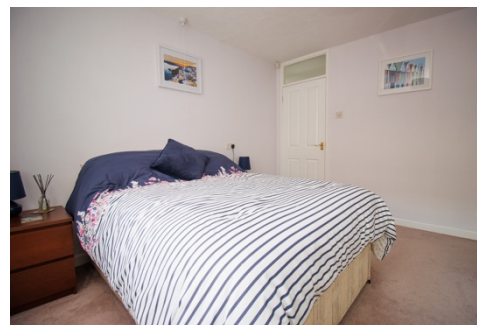
Radiator. Upvc double glazed window.



**BEDROOM TWO**

**2.74m x 3.40m** (12'0" x 11'2")

Built-in wardrobes with sliding mirror doors. Radiator. Upvc double glazed window.



**BEDROOM THREE**  
**2.74m x 2.79m** (9'0" x 9'2")

Radiator. Upvc double glazed window.



**BEDROOM ONE**

**3.65m x 3.12m** (12'0" x 10'3")

Radiator. Upvc double glazed window.



**OUTSIDE:**

Front garden. Drive to **GARAGE**. Enclosed south facing rear garden. Patio area. **TWO SHEDS.**

/ continued over